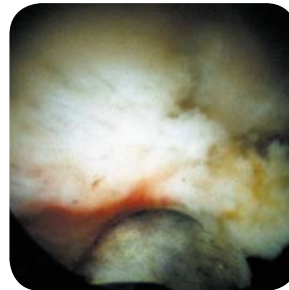




# VersaCut™ Morcellator System

Precision System for Endoscopic Tissue Removal

The VersaCut tissue morcellator system provides rapid and efficient endoscopic removal of soft tissue. The morcellator is ideal for the removal of resected prostate tissue from the bladder after holmium laser enucleation of the prostate (HoLEP). The vacuum pump system is operated by footswitch to allow precise control over suction level and morcellation speed.



Suction and blade reciprocation enable rapid morcellation of enucleated adenoma after HoLEP



HoLEP is endoscopic equivalent to open prostatectomy with fiber acting as tip of the finger

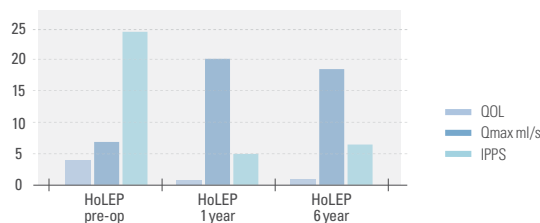


Tissue collected after morcellation is available for histology analysis

## HoLEP stands the test of time

- Provide standard of care for treating BPH (HoLAP & HoLEP): AUA and EAU support these as first line treatment options <sup>1</sup>
- Extensive clinical evidence; HoLAP and HoLEP have over 14 randomized controlled trials
- 2,3,4,5,6 and 7 year data from 5 institutions

## HoLEP is durable at 6 years <sup>2</sup>



- Adjustable morcellation and aspiration rates provide maximum flexibility
- Compact size fits all operating room environments
- Handpiece ergonomically designed for either right- or left-hand use
- Reusable blade set enhances overall cost effectiveness



## Lumenis Global Sales Offices

### America

#### Santa Clara, CA

Tel +1 408 764 3000  
+1 877 586 3647  
Fax +1 408 764 3999  
+1 800 505 1133

### Europe, Middle East & Africa

#### Dreieich-Dreieichenhain, Germany

Tel +49 6103 8335 0  
Fax +49 6103 8335 100

#### Formello (RM), Italy

Tel +39 06 90 75 230  
Fax +39 06 90 75 269

#### London, UK

Tel +44 20 8324 4200  
Fax +44 20 8324 4222

### Asia-Pacific

#### Beijing, China

Tel +86 10 6510 2620  
Fax +86 10 6510 2621

#### Gurgaon, India

Tel +91 124 422 33 80  
Fax +91 124 422 33 83

### Japan

#### Tokyo, Japan

Tel +81 3 5789 8300  
Fax +81 3 5789 8310

Internet: [www.lumenis.com](http://www.lumenis.com)

Email: [information@lumenis.com](mailto:information@lumenis.com)

## Accessories



**Reusable Handpiece**  
P/N 0637-201-01  
Ergonomically designed for right- or left-hand use



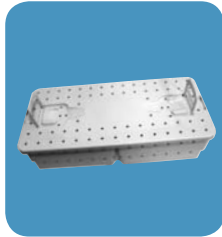
**Control Box**  
P/N 0637-202-01  
Allows precise adjustment of aspiration and morcellation speed



**Sterile Tubing**  
P/N 2521-0219  
Enables aspiration and retrieval of tissue



**Blade Set**  
P/N 0636-454-01  
Reusable blade set lowers the cost per case



**Sterilization Tray**  
P/N 0636-469-01  
Designed for processing handpiece, blades sets and endoscope adapters



**Short Cleaning Brushes**  
P/N 5404-0061  
Ensures thorough removal of debris prior to sterilization (3 pack)



**Long Cleaning Brushes**  
P/N 5404-0060  
Ensures thorough removal of debris prior to sterilization (3 pack)



**Endoscope Adapters**  
P/N 0637-191-01  
Snaps onto blades to accommodate varying scope lengths (3 pack)

Specifications	
Product number	VersaCut system 0637-245-01
System Components	Reusable handpiece, Control box, Blade set, Sterilization tray, Endoscope adaptor kit, Long and short cleaning brushes, Sterile tubing and Operator manual
Scope Compatibility	Continuous flow endoscope with $\geq 5$ mm (26F) straight working channel
Morcellation Rate	Approximately 7 grams/minute
Control Box Dimensions	13 cm x 28 cm x 29 cm; 5 in x 11.1 in x 11.4 in (H x W x D)
Handpiece Dimensions	21 cm x 8 cm x 5 cm; 8.3 in x 3.2 in x 2 in (H x W x D)
Control Box Weight	10.8 kg; 23.8 lbs
Handpiece Weight	0.9 kg; 2.1 lbs
Utilities	100/115 V ~50/60 Hz, 3.15 A single phase or 230 V ~50/60 Hz, 1.6 A single phase



<sup>1</sup> AUA guidelines for BPH, 2003 - [http://www.auanet.org/content/guidelines-and-quality-care/clinical-guidelines/main-reports/bph-management/chapt\\_1\\_appendix.pdf](http://www.auanet.org/content/guidelines-and-quality-care/clinical-guidelines/main-reports/bph-management/chapt_1_appendix.pdf); EAU guidelines for BPH, 2005 - [http://www.uroweb.org/fileadmin/tx\\_eauguidelines/2009/Pocket/BPH.pdf](http://www.uroweb.org/fileadmin/tx_eauguidelines/2009/Pocket/BPH.pdf); New ureteral stone guidelines reflect treatment changes - Urology Times, Jan 2008, Vol. 36, No. 1.

<sup>2</sup> Holmium Laser Enucleation of the Prostate; Results at 6 Years, Gillling PJ, Aho, TF, Frampton CM, et al. Eur Urol 2008 Apr;53(4):744-9