



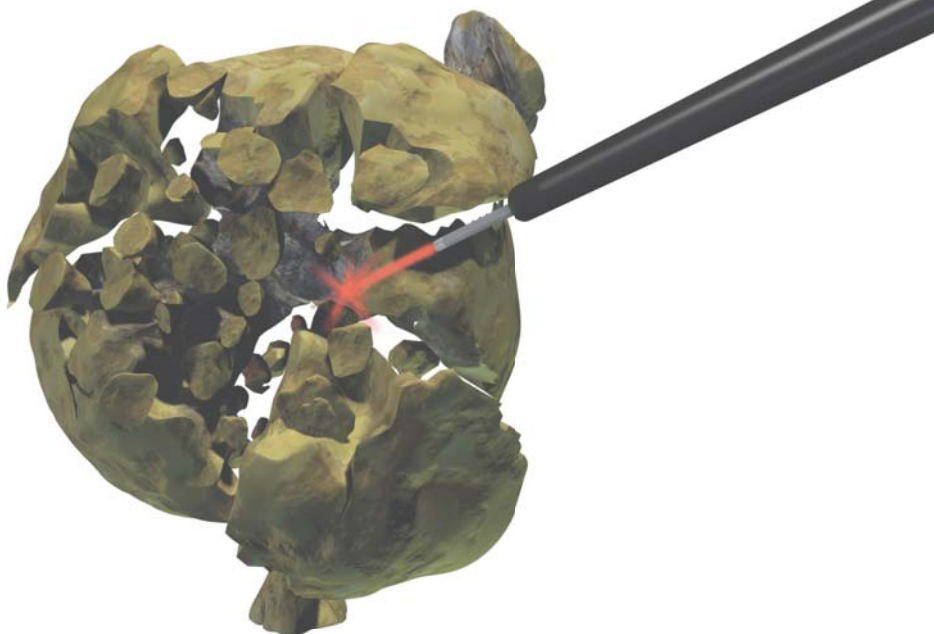
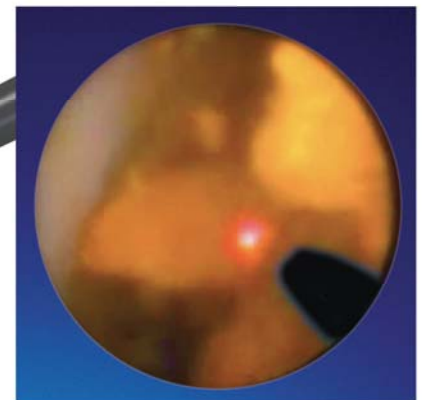
Slimline GI™

The First Laser Fiber Designed for ERCP

Large stones refractory to standard endotherapy are fragmented in a single ERCP procedure with a single laser fiber.



Designed for use with modern Cholangioscopy systems, calculi and soft tissue are managed with laser energy while under direct visualization.



Holmium Laser Lithotripsy, the *Gold Standard for Urology*, is now a viable option for the GI Suite.

Cleared for use in open and endoscopic gastroenterology surgery.

The Slimline GI™ is approved for ablation, vaporization, incision, excision, resection, coagulation, and hemostasis, in 23 GI™ indications including:

- Biliary/bile duct calculi
- Benign and malignant neoplasm

Lumenis Lasers



VersaPulse® PowerSuite™ holmium and dual wavelength lasers

Technical Specifications

Stones	
Product No.	0642-431-01
Jacket Color	Black
Packaging	3 Fibers per Box
Length	4.5 meters
Usability	Single Use
Wavelengths	Holmium and Nd:YAG (2120 and 1064nm)
Scope Caompatibility	Flexible, semirigid and rigid endoscopes
Core diameter	365 u
Max. Outer Diameter	580 u
Min. Working Channel	2.1F
Max Energy	4.0 J
Max. Power	100 W
Max Repetition Rate	At any energy setting, repetition rate should be adjusted so as not to exceed maxium power listed above

Lumenis Global Sales Offices

Lumenis Inc.
Santa Clara, CA, USA
Tel +1 408 764 3000
+1 877 586 3647
Fax +1 408 764 3999
+1 800 505 1133

Lumenis (GERMANY) GmbH
Dreieich-Dreieichenhain,
Germany
Tel +49 6103 8335 0
Fax +49 6103 8335 300

Lumenis (FRANCE) SARL
Orsay, France
Tel +33 1 69 33 14 20
Fax +33 1 60 19 57 23

Lumenis (UK) Ltd.
London, UK
Tel +44 20 8324 4200
Fax +44 20 8324 4222

Lumenis (CHINA) Ltd.
Beijing, China
Tel +86 10 6510 2620
Fax +86 10 6510 2621

Lumenis (ITALY) Srl.
Formello (RM), Italy
Tel +39 06 09 75 320
Fax +39 06 09 75 320

Lumenis (JAPAN) Co. Ltd.
Tokyo, Japan
Tel +81 3 5789 8300
Fax +81 3 5789 8310

Internet: www.lumenis.com
Email:
information@lumenis.com

